

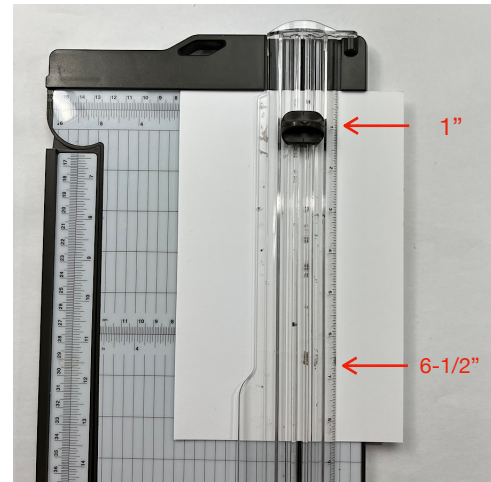
12 Weeks of Christmas



Week 3: Snowman Magic Side-Step Card

Step #1:

- Place 5-1/2" x 8" piece of Thick Basic White cardstock into Paper Trimmer with 5-1/2" side at the top of trimmer and lining up at 3". Make a cut from 1" just to 6-1/2".



Step #2

- Score at 4-1/4" just to the cut on the 2-1/2" panel.



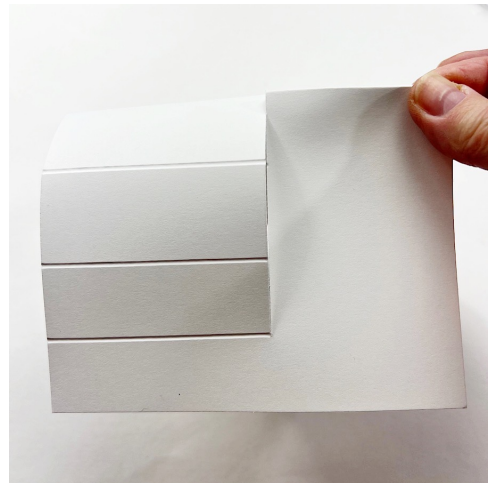
Step #3

- Score at 1", 2", 3-1/4", 4-1/2" and 6-1/2" just to the cut on the 3" panel. (note: when placing card in scoring tool, make sure the 1" score line will end where the cut in card begins.)



Step #4

- Fold on the 4-1/4" score line.



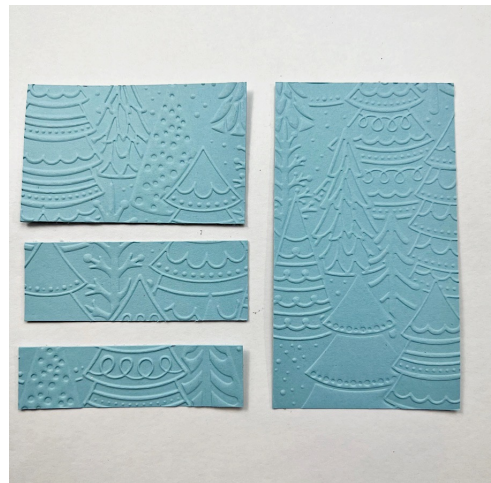
Step #5

- Fold remaining score lines creating "steps" as shown.



Step #6

- Place 5" x 4" piece of Balmy Blue cardstock inside Whimsical Woodland 3D Embossing Folder.
- Cut a 2-1/4" x 4" piece from embossed card.
- Cut a 3/4", 1" and 2-3/4" strips from the remaining piece of embossed card.



Step #7

- Adhere embossed pieces to corresponding panels on card front.



Step #8 With dies from Snowman Dies use die-cutting machine to cut the following:

- Two trees from Garden Green cardstock and one tree from Pear Pizzaz cardstock.
- Snowman from Basic White cardstock.
- Arms from Basic Black cardstock.
- Five snowflakes from White Glimmer paper.



Step #9 Stamp the following images from Snowman Magic stamp set onto Basic White cardstock:

- Snowman image using Balmy Blue ink with face image using Memento Tuxedo Black ink.
- Hat, scarf and bird images using Real Red ink.
- Stamp rabbit image using Memento Tuxedo Black ink
- Cut stamped images out with dies from Snowman Dies using die-cutting machine.
- Stamp sentiment using Memento Tuxedo Black ink. Fussy cut out.



Step #10

- Put snowman together using adhesive. Adhere extra snowman die-cut to back of snowman.
- Adhere die-cut images to “steps” on card using adhesive.
- Adhere sentiment onto card front using Stampin’ Dimensionals.
- Adhere snowflakes to card front using adhesive.
- Apply “snow” under rabbit and snowman using Snowfall Accents Puff Paint.



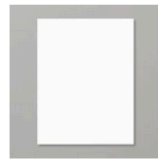
Snowman Magic Bundle (English)



Tuxedo Black Memento Ink Pad



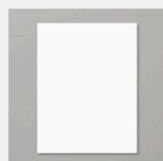
Real Red Classic Stampin' Pad



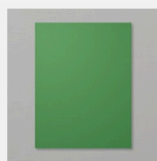
Basic White 8 1/2" X 11" Thick Cardstock



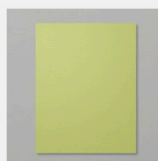
Balmy Blue 8-1/2" X 11" Cardstock



Basic White 8 1/2" X 11" Cardstock



Garden Green 8-1/2" X 11" Cardstock



Pear Pizzazz 8-1/2" X 11" Cardstock



Real Red & White 6" X 6" (15.2 X 15.2 Cm) Glimmer Paper



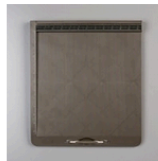
Whimsical Woodland 3 D Embossing Folder Paper



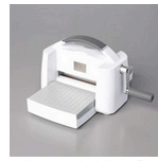
Snowfall Accents Puff Paint



Paper Trimmer



Simply Scored



Stampin' Cut & Emboss Machine



Heat Tool (Us And Canada)



Multipurpose Liquid Glue



Stampin' Seal



Stampin' Dimensionals

Product List

- [Snowman Magic Bundle \(English\)](#)
- [Tuxedo Black Memento Ink Pad](#)
- [Real Red Classic Stampin' Pad](#)
- [Basic White 8 1/2" X 11" Thick Cardstock](#)
- [Balmy Blue 8-1/2" X 11" Cardstock](#)
- [Basic White 8 1/2" X 11" Cardstock](#)
- [Garden Green 8-1/2" X 11" Cardstock](#)
- [Pear Pizzazz 8-1/2" X 11" Cardstock](#)
- [Real Red & White 6" X 6" \(15.2 X 15.2 Cm\) Glimmer Paper](#)
- [Whimsical Woodland 3 D Embossing Folder](#)
- [Snowfall Accents Puff Paint](#)
- [Paper Trimmer](#)
- [Simply Scored](#)
- [Stampin' Cut & Emboss Machine](#)
- [Heat Tool \(Us And Canada\)](#)
- [Multipurpose Liquid Glue](#)
- [Stampin' Seal](#)
- [Stampin' Dimensionals](#)

•