

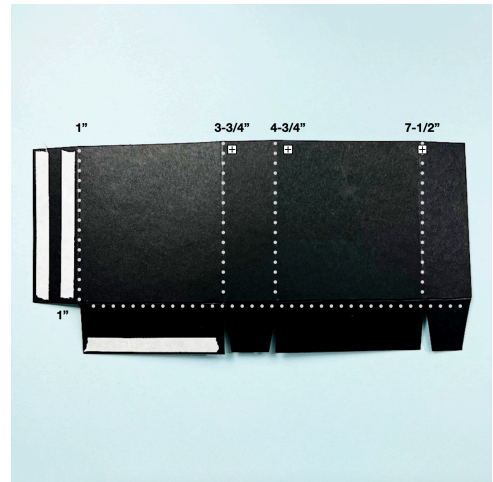
12 Weeks of Christmas



Week 8: Penguin Treat box

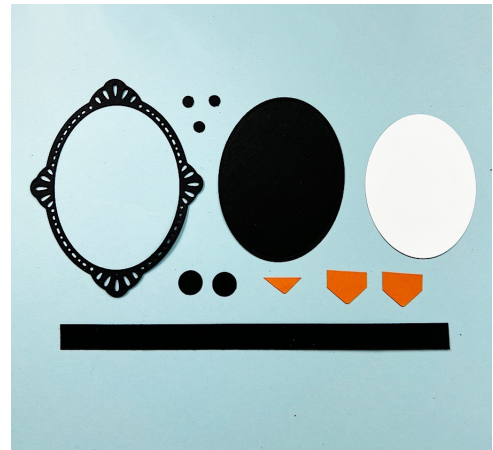
Step #1:

- Score 8-1/2" x 4" piece of Basic Black cardstock at 1", 3-3/4", 4-3/4" and 7-1/2" on the 8-1/2" side.
- Score at 1" on the 4" side.
- Trim cardstock per diagram.
- Apply adhesive per diagram. Assemble box.



Step #2

- Cut frame from 3-3/4" x 5" piece of Basic Black cardstock with die from Framed Florets Dies using die-cutting machine. (Tip: You will use both pieces to assemble penguin.)
- Cut oval from 3" x 4" piece of Basic White cardstock with die from Framed Florets Dies using die-cutting machine. (Tip: You will only use the center oval die-cut to assemble penguin.)
- Punch two circles from scrap of Basic Black cardstock using a 1/2" circle punch.
- Punch penguin "nose" and two "feet" from 3/4" strip of Pumpkin Pie cardstock using Heart Punch.
- Cut 1/2" x 8-1/2" strip of Basic Black cardstock.
- Punch several small circles from scrap of Basic Black cardstock using a 1/4" handheld circle punch.



Step #3

- Insert Basic White die-cut into Heart Punch per photo to create Penguin body.



Step #4

- Adhere both pieces of Basic Black frame die-cuts to box front using adhesive.
- Adhere Basic White die-cut to center of frame on box front using adhesive.
- Adhere remaining elements to box front to create penguin.
- Use chalk marker to add sparkles to penguin eyes.
- Tie length of Real Red 3/8" rigor into bow; adhere to box front using Mini Glue Dot.



Product List

- [Framed Florets Dies](#)
- [Heart Punch Pack](#)
- [Basic Black 8-1/2" X 11" Cardstock](#)
- [Basic White 8 1/2" X 11" Cardstock](#)
- [Pumpkin Pie 8-1/2" X 11" Cardstock](#)
- [Simply Scored](#)
- [Stampin' Cut & Emboss Machine](#)
- [Tear & Tape Adhesive](#)
- [Multipurpose Liquid Glue](#)

