

12 Weeks of Christmas



Week 10: Sweet Gingerbread Treat Pocket

Step #1:

- Punch or die-cut a half circle on one 4-3/8" end of a 4-3/8" x 7" piece of Sweetest Christmas Designer Series Paper.
- Fold Designer Series Paper in half on the 7" side. Apply a narrow bead of adhesive to both sides creating a pocket.
- Slide Peekaboo Treat Bag into pocket.



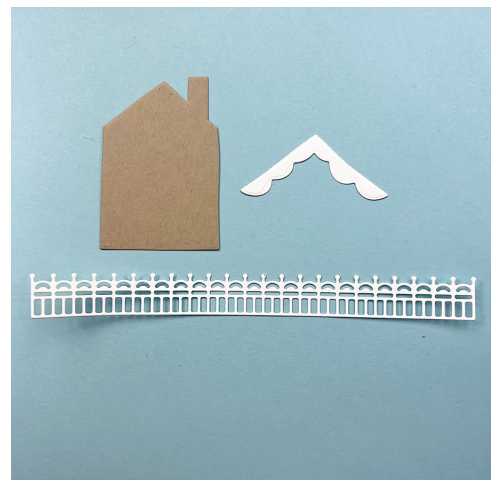
Step #2

- Adhere Wonderful Snowflakes die-cut to front of Peekaboo Treat Bag.



Step #3

- Cut gingerbread house from 2" x 3" piece of Crumb Cake cardstock with die from the Gingerbread House Dies using die-cutting machine.
- Cut scalloped roof from scrap of Basic White cardstock with die from the Gingerbread House Dies using die-cutting Machine.
- Cut fence from 6-1/4" x 1" piece of Basic White cardstock with die from the Gingerbread House Dies using die-cutting machine.



Step #4

- Stamp door, windows, heart, gumdrops and word bubble images from the Sweet Gingerbread stamp set onto Basic White cardstock using Real Red, Shaded Spruce, Pool Party and Memento Tuxedo Black inks.
- Cut stamped images out with dies from the Gingerbread House Dies using die-cutting Machine.



Step #5

- Stamp flourish image from the Sweet Gingerbread stamp set onto front of die-cut house using Shaded Spruce ink. Assemble house.
- Adhere fence die-cut to front of treat bag pocket using adhesive.
- Adhere assembled gingerbread house to front of treat bag pocket using Stampin' Dimensionals.
- Adhere gum drop die-cuts to front of treat bag pocket using Mini Stampin' Dimensionals.
- Adhere word bubble die-cut to front of treat bag pocket using adhesive.
- Clip mini clothespin to pocket. Tie double bow with white baker's twine. Adhere bow to clothespin on bag using a Mini Glue Dot.



— Supplies —

Sweet Gingerbread Bundle (English) — <https://bit.ly/3pD43EB>

Real Red Classic Stampin' Pad — <https://bit.ly/3obEZCN>

Pool Party Classic Stampin' Pad — <https://bit.ly/3fbKpM3>

Shaded Spruce Classic Stampin' Pad — <https://bit.ly/3eEkZGJ>

Tuxedo Black Memento Ink Pad — <https://bit.ly/33BmKPv>

Peekaboo Treat Bags — <https://bit.ly/3urEGbt>

Sweetest Christmas 12" X 12" (30.5 X 30.5 Cm) Designer Series Paper — <https://bit.ly/3P5WQHP>

Basic White 8 1/2" X 11" Cardstock — <https://bit.ly/3ihibir>

Crumb Cake 8-1/2" X 11" Cardstock — <https://bit.ly/2Yx1Vkf>

Wonderful Snowflakes — <https://bit.ly/3VOyohS>

Baker's Twine Essentials Pack — <https://bit.ly/367DYaf>

Multipurpose Liquid Glue — <https://bit.ly/33UUbfM>

Mini Stampin' Dimensionals — <https://bit.ly/31RGk7x>

Stampin' Dimensionals — <https://bit.ly/2XucggY>

Mini Glue Dots — <https://bit.ly/3iWvB2t>

Take Your Pick — <https://bit.ly/3pTTOK9>



Sweet Gingerbread Bundle
(English)



Real Red Classic Stampin'
Pad



Pool Party Classic
Stampin' Pad



Shaded Spruce Classic
Stampin' Pad



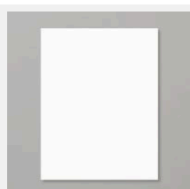
Tuxedo Black Memento
Ink Pad



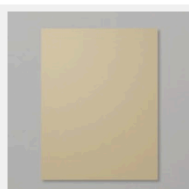
Peekaboo Treat Bags



Sweetest Christmas 12" X
12" (30.5 X 30.5 Cm)
Designer Series Paper



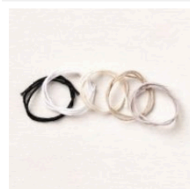
Basic White 8 1/2" X 11"
Cardstock



Crumb Cake 8-1/2" X 11"
Cardstock



Wonderful Snowflakes



Baker's Twine Essentials
Pack



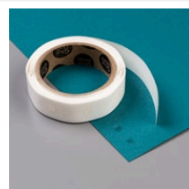
Multipurpose Liquid Glue



Mini Stampin'
Dimensionals



Stampin' Dimensionals



Mini Glue Dots



Take Your Pick